



...connecting to the aftermarket

CTSLR008.2

Land Rover Steering Wheel Control Interface



Plug and Play



USB Updateable



Works with
CAN-Bus



Park Brake



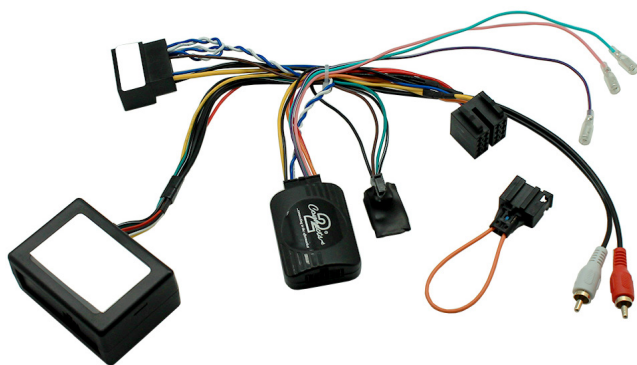
Reverse Gear



Ignition



OEM Amplifier



INSTRUCTION MANUAL

www.connects2.com

Designed and
Engineered
in the UK.



CTSLR008.2

Land Rover steering wheel control interface for Land Rover vehicles with CAN-Bus.

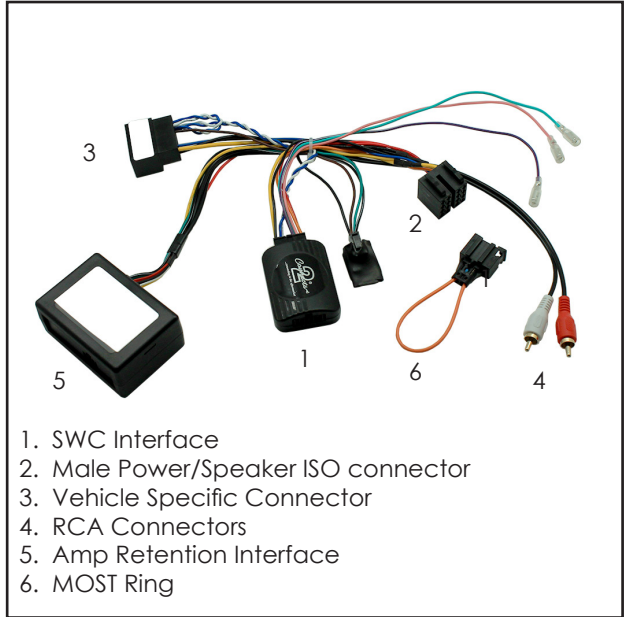
Product Contents

- Interface
- Harness
- Instruction

Application

Range Rover Vogue 2002 - 2012

Retains Steering Wheel Controls and OEM Fibre Amplifier



Prior to installation

Read the manual prior to installation. Technical knowledge is necessary for installation. The place of installation must be free of moisture and away from heat sources. Please ensure you use the correct tools to avoid damage to the vehicle or product.

Connects2 can not be held responsible for the installation of this product.

Technical Support

Connects2 want to provide a fast and suitable resolution should you encounter any technical issues. With this in mind, when contacting Connects2, try to provide as much information as possible. This will speed up the process and help us to help you.

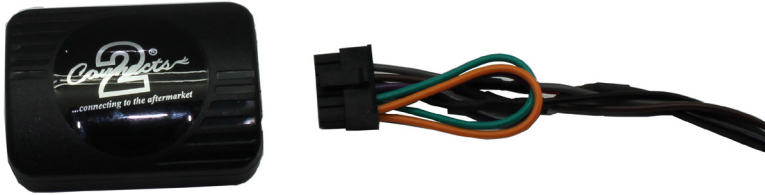
Please use our dedicated online technical support centre: support.connects2.com



Subscribe to our YouTube Channel for installation guides and tips... www.youtube.com/connects2

FITTING GUIDE

1. Remove and disconnect the original head unit.
2. Connect the 12 way molex connector of the head unit patch lead (supplied separately) to the interface (Pg.2. Fig 1.)



3. Connect the opposite end of head unit patch lead to the head unit steering wheel control input on the back of the aftermarket head unit. This may be a 3.5mm jack plug or a wire input depending upon the head unit brand being fitted. Please see the head unit installation manual for further information on where to connect.

Important Note: This step must be completed before connecting power to the interface. Failure to do so may result in no steering wheel control function.

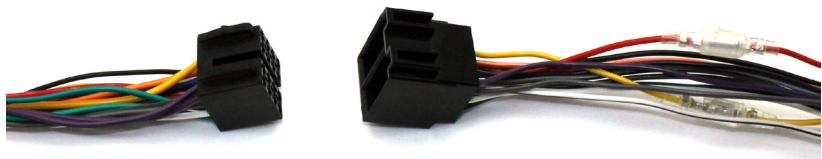


4. Connect the 14 way molex connector to the interface.



FITTING GUIDE

5. Connect the male power/speaker ISO harness (Pg.2. Fig 2.) to the female power/speaker ISO harness from the aftermarket head unit.



For aftermarket head units which do not have an ISO connector the interface uses the following wiring colours:

| Wire Colour | Function |
|--------------|----------------|
| Yellow | Permanent 12V |
| Black | Ground |
| Red | 12V Ignition |
| Orange | Illumination |
| Blue | Antenna Remote |
| Pink | Speed Pulse |
| Green | Park Brake |
| Purple/White | Reverse |

| Wire Colour | Function |
|--------------|-----------------------|
| Purple | Right Rear Speaker + |
| Purple/Black | Right Rear Speaker - |
| Green | Left Rear Speaker + |
| Green/Black | Left Rear Speaker - |
| Grey | Right Front Speaker + |
| Grey/Black | Right Front Speaker - |
| White | Left Front Speaker + |
| White/Black | Left Front Speaker - |

6. Connect the female vehicle specific connector to the male vehicle connector (Pg.2. Fig 3.)

7. Connect the red/white RCA connectors (Pg. 2 Fig 4.) to the inputs on the head unit.

8. Your vehicle will have two fibre amp cables, one into the OEM head unit and one into the OEM display.

a) Plug the cable originally designated for the head unit into the CTSLR008.2 amp retention interface (Pg.2 Fig 5.)

b) Remove the cable from the OEM display and replace it with the included MOST loop (orange wire) to reroute the signal.

9. Test head unit for correct operation and reassemble the dash.

STEERING WHEEL CONTROL FUNCTIONS



1. Track +
2. Volume +
3. Volume -
4. Track -
5. Speech - [Hold to activate App radio functions with selected Alpine, Clarion and Pioneer aftermarket head units]