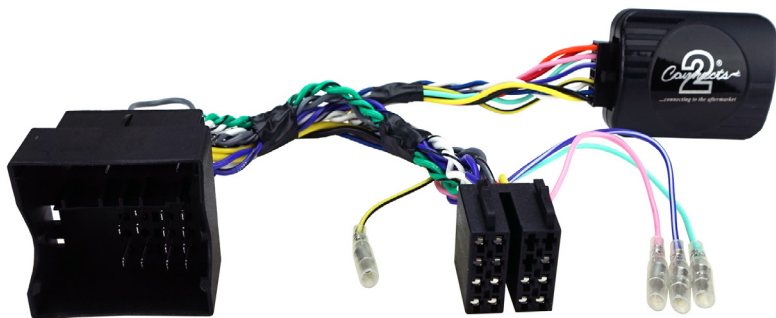




...connecting to the aftermarket

CTSMC015.2

Mercedes Benz Steering Wheel Control Interface



Vehicle Application

Mercedes Sprinter 2018-Up

Key Features

- Retains Steering Wheel Controls (if equipped)
 - Retains OEM Phone Buttons (if equipped)
- Provides illumination, Ignition, Park Brake & Reverse Gear Feeds

www.connects2.com

Designed and
Engineered
in the UK.



CTSMC014.2

CAN-Bus Steering Wheel Control Interface for Mercedes Sprinter
Product Contents

- 1. Interface
- 2. Harness
- 3. Instruction

Prior to installation

Read the manual prior to installation. Technical knowledge is necessary for installation. The place of installation must be free of moisture and away from heat sources. Please ensure you use the correct tools to avoid damage to the vehicle or product.

Connects2 can not be held responsible for the installation of this product.

This product requires the use of a voltage dropper (included) in order to convert the voltage to 12V. Ensure that the voltage dropper is connected to the interface before connecting power (See Step 5).

Wiring Colour Codes

Purple	Right Rear Speaker +	Yellow	Permanent 12V
Purple/Black	Right Rear Speaker -	Black	Ground
Green	Left Rear Speaker +	Red	Ignition 12V
Green/Black	Left Rear Speaker -	Pink	Speed Pulse
Grey	Right Front Speaker +	Green	Park Brake
Grey/Black	Right Front Speaker -	Purple/White	Reverse Gear
White	Left Front Speaker +		
White/Black	Left Front Speaker -		

Technical Support

Connects2 want to provide a fast and suitable resolution should you encounter any technical issues. With this in mind, when contacting Connects2, try to provide as much Information as possible. This will speed up the process and help us to help you.

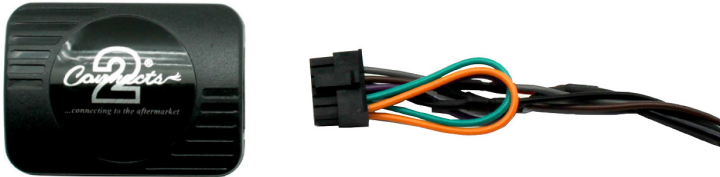
Please use our dedicated online technical support centre: support.connects2.com



Subscribe to our YouTube Channel for installation guides and tips... www.youtube.com/connects2

FITTING GUIDE

1. Remove and disconnect the original head unit.
2. Connect the 12 way molex connector of the head unit patch lead (supplied separately) to the interface.



3. Connect the opposite end of head unit patch lead to the head unit steering wheel control input on the back of the aftermarket head unit.

NB: This may be a 3.5mm jack plug or a wire input depending upon the head unit brand being fitted. Please see the head unit installation manual for further information on where to connect.

Important: This step must be completed before connecting power to the interface. Failure to so do may result in no steering wheel control function.

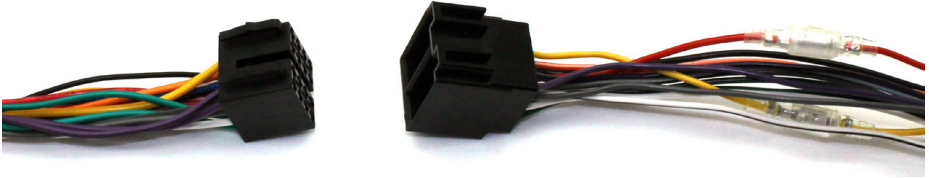


4. Connect the 14 way molex connector to the interface



FITTING GUIDE

6. Connect the male power/speaker ISO harness to the female power/speaker ISO harness from the aftermarket head unit. For aftermarket head units without an ISO connector, please refer to the wiring colours on Pg. 2.



7. Connect the female vehicle specific connector to the male vehicle connector. Test head unit for correct operation.

STEERING WHEEL CONTROL FUNCTIONS

1. Track +
2. Page +
3. Page -
4. Track -
5. Volume -
6. Hang Up
7. Pick Up
8. Volume +

